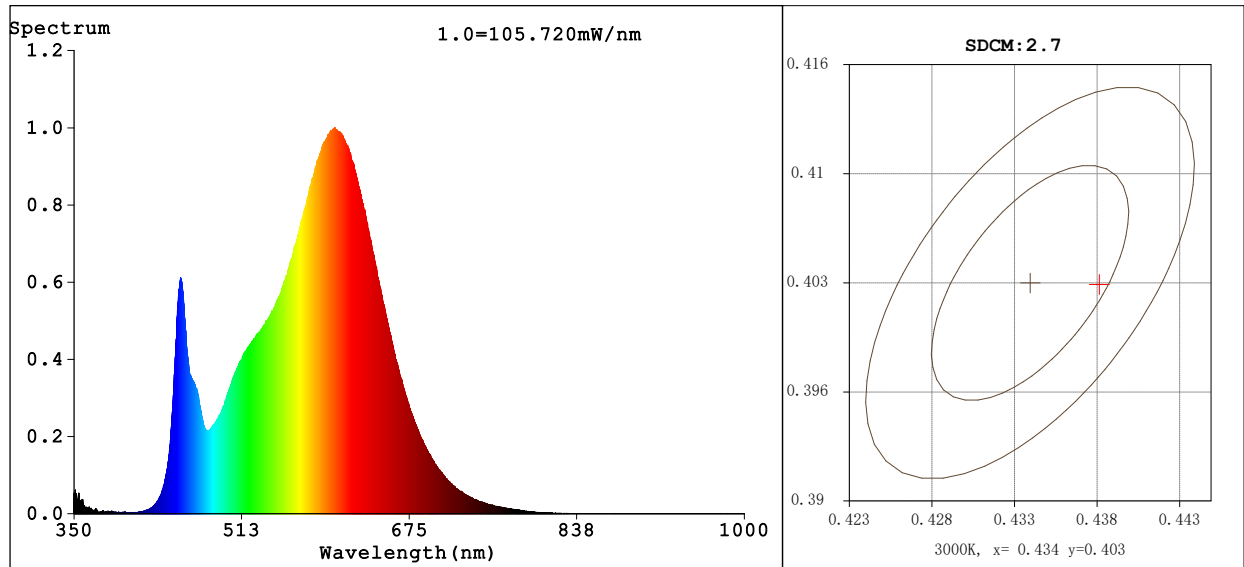


Spectrum Test Report

**Color Parameters:**

Chromaticity Coordinate: $x=0.4380$ $y=0.4029$ / $u'=0.2518$ $v'=0.5211$
 CCT=2973K (Duv=-0.0006) Dominant WL:Ld =583.2nm WL:Lc = --nm Purity=52.4%
 Ratio:R=23.2% G=74.0% B=2.8% Peak WL:Lp=603.0nm FWHM=116.4nm
 Render Index:Ra=82.0 AvgR=76.5 TM30:Rf=83 Rg=94

R1 =81 R2 =93 R3 =93 R4 =79 R5 =82 R6 =92 R7 =80
 R8 =56 R9 =3 R10=84 R11=79 R12=72 R13=84 R14=97 R15=73

Photo Parameters:

Flux = 5008 lm Eff. : 132.98 lm/W Fe = 15.17 W
 Scotopic:6825 S/P:1.3627

Electrical parameters:

V = 231.32 V I = 0.1679 A P = 37.66 W PF = 0.9696

Kdisp(IEC) = 0.9797

LEVEL:OUT WHITE:ANSI_3000K

Status: Integral T = 60 ms Ip = 46713 (71%)

GBT5702

Ra = 82

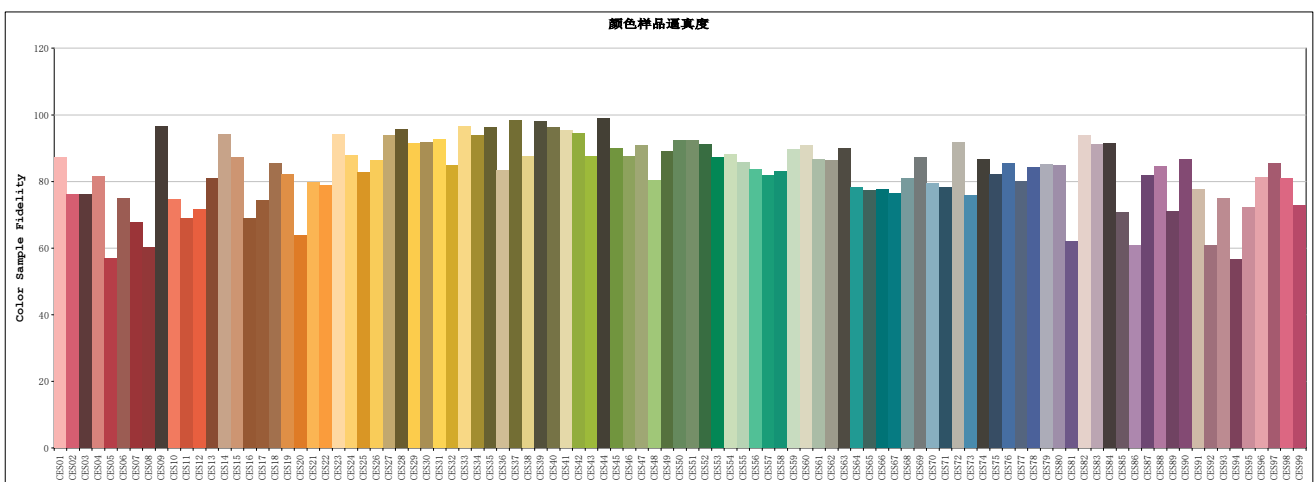
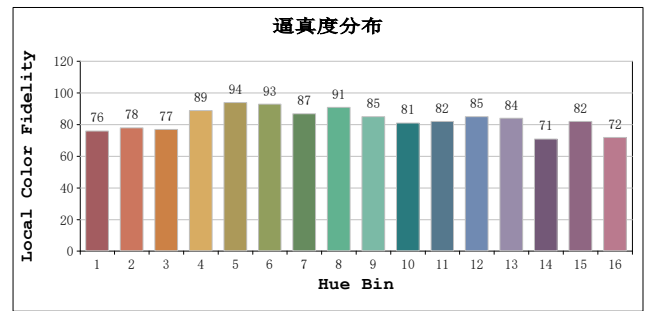
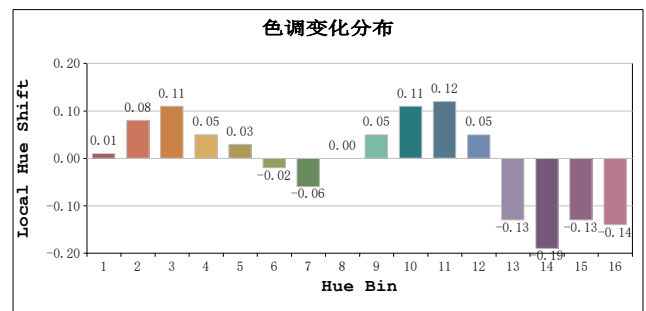
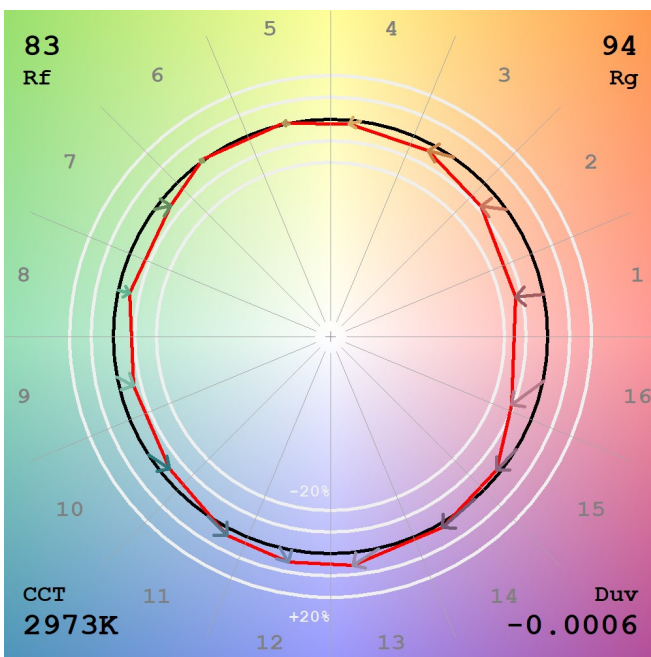
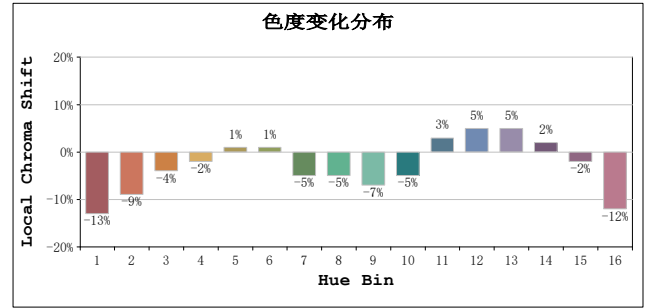
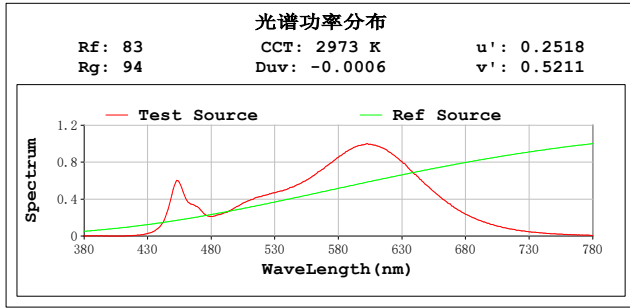
Ga = 0.91

Model:
 Tester:
 Temperature:25.3Deg
 Manufacturer:

Number:215
 Date:2025-05-23 15:13:15
 Humidity:65.0%
 Remarks:

TM30

视场角:2 度



Model:
 Tester:
 Temperature:25.3Deg
 Manufacturer:

Number:215
 Date:2025-05-23 15:13:15
 Humidity:65.0%
 Remarks: